

The Central BESS

Driving Queensland's shift towards clean energy.

Project snapshot

ACEnergy is developing the Central BESS (Battery Energy Storage System) project near Bouldercombe in Queensland's Rockhampton Region.

The project will deliver 500 MW of battery storage, marking an important milestone in delivering more affordable and reliable power for Queenslanders.

The Central BESS was approved in October 2025 with strong conditions that reflect community feedback and ensure the highest standards of safety, environmental care and visual integration.

Project benefits

The Central BESS will create local jobs, drive long-term investment in the region, and deliver a \$3.6 million Benefit Sharing Program to neighbours, the local community, and First Nations groups.

At a glance

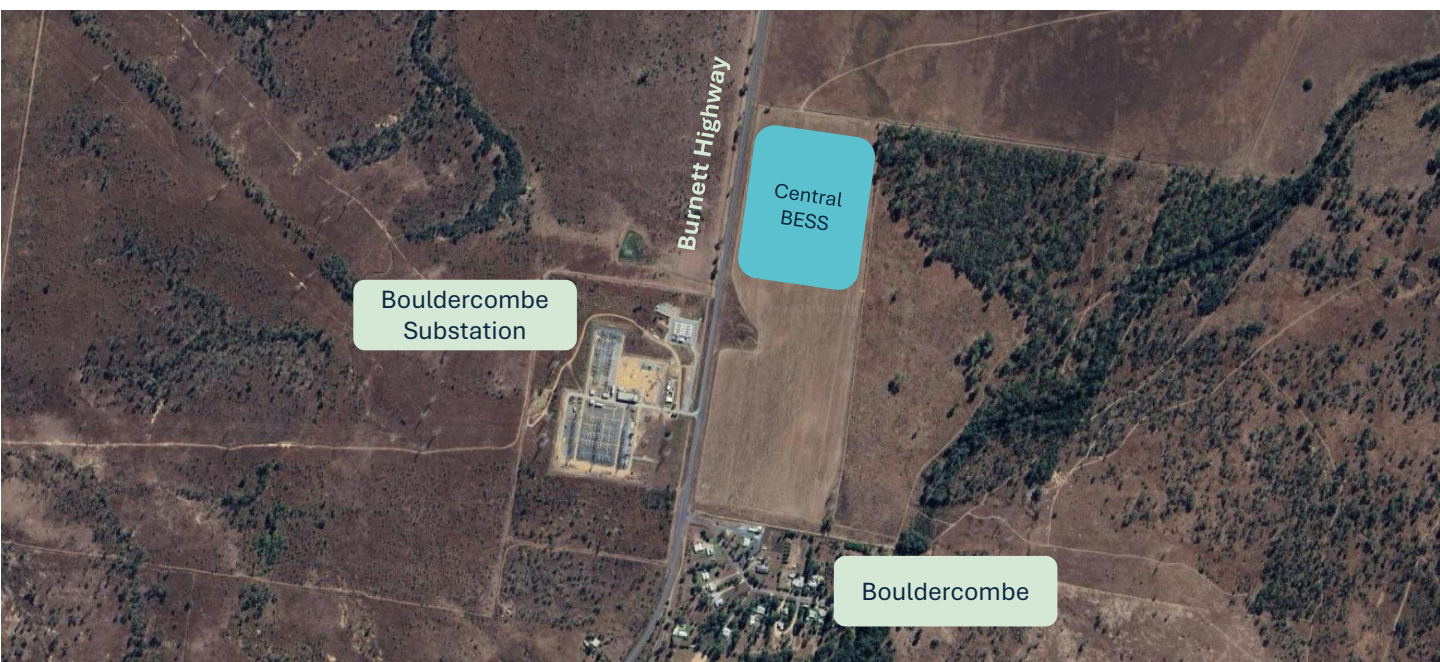
Capacity: **500 MW**

Land size: **10 hectares**

Location: **Bouldercombe (Rockhampton Region), Queensland**

Project timeline

- 2023-2025**
Development and grid connection assessments and approvals
- 2026-2027**
Construction & commissioning
- From 2027**
Operations & maintenance



Frequently Asked Questions

What is the Central BESS project?

The Central BESS is a 500 MW Battery Energy Storage System Project located near Bouldercombe, Queensland. It will store energy during periods of low demand and feed it back into the grid at times of high demand, helping enhance grid stability and lowering power prices. The Central BESS will connect directly into the Bouldercombe Substation at 275kV. This proximity will lower the cost of connection, keeping prices down for people and businesses, and mitigate impacts to the environment.

What is the project timeline?

ACEnergy has been undertaking assessments required to meet statutory and regulatory requirements since securing the land in 2023. In late 2025, the Planning and Environment Court approved ACFlex's amended development application. We expect construction to start in mid-2026, with the project operational from 2027.

How will the project benefit local communities?

We are committed to building a positive legacy in the Rockhampton Region. The project will create around 50 jobs during construction, and five full time jobs during operations. It will also drive long term investment in the region, and deliver more affordable, reliable power for Queenslanders.

ACEnergy will also deliver \$3.6 million in benefit sharing funds over the life of the project to neighbours of the project, the local community, and First Nations groups. A local Community Reference Group will guide the Community Benefit Fund component of the program.

What commitments guide the project?

The project approval comes with strong conditions that reflect community feedback. Key community-focused commitments include:

- **Bushfire safety:** A dedicated 576,000-litre firefighting water tank, internal fire breaks, and perimeter fire trails designed for emergency access will be in place before operations begin.
- **Emergency preparedness:** We will work closely with the Queensland Fire Department and local fire authorities to develop and implement comprehensive emergency and fire safety plans.
- **Noise management:** We will select equipment with low noise emissions and construct noise walls, to meet noise standards, with a public post-construction noise assessment ensuring any further required actions are implemented.
- **Visual integration:** All battery containers will be finished in muted green tones and non-reflective materials to blend with the natural surroundings.
- **Vegetation buffering:** A wider and more varied vegetation buffer will be planted around the site to improve screening and support local biodiversity.
- **Site rehabilitation:** At the end of its operational life, the site will be fully decommissioned and rehabilitated to approved standards.

Who can I contact if I have questions?

You can reach out to our project team at info@thecentralbess.com.au.

About ACFlex

We are an Australian-owned clean energy developer specialising in utility-scale solar and Battery Energy Storage Systems (BESS). With over 1.1 GW of capacity delivered and a further 2.7 GW in our pipeline, we are committed to advancing Australia's transition to a sustainable, low-emissions future.